



## Springs Wings

<http://springswings.tripod.com>

June 2004



### *Wren's Wramblings . . .*

Friday night, almost eleven PM, must be that the newsletter article is late again. I could ask where did the month go, but I've already done that article.

Almost the middle of June, and I hope you have put some miles on the bikes by now. We did get a few rides in this past few weeks. One long one to Berthod for Chapter O's meeting, then the back way through Blackhawk, Pine Junction, Woodland Park to Canon City for their fundraiser dinner. A couple of shorter day rides, and of course I get to ride 115 down to Canon City everyday, on the bike as often as possible.

Our dinner ride this month was well attended. Ron and Marsha hosted 22 folks at Jose Muldoon's. Weather didn't cooperate, but then we took four wheels and could have a margarita. Worked for me!! Bob and Jann Strath are going to lead us to Pueblo's Rosario's on the 17<sup>th</sup>. Please call Bob to let him know you are going so he can give a count to the restaurant. His phone number is 594-9685, and his email is [Bobstrath30@msn.com](mailto:Bobstrath30@msn.com). We will be leaving Apex at 6 PM.

Mark Atwell has some exciting rides on the horizon. On the 26<sup>th</sup> he has planned to lead a ride to Crawford on the Western slope to visit Joe Cocker's ranch. They have a fundraiser for the local kids, and for

a donation you can tour Pam and Joe's mansion. If you aren't as old as me you may not remember that Cocker was a singer, or I should say still is. We saw him in concert with Tina Turner a few years ago. He is from England and still tours here and in Europe.

The following day is the Ride for Kids in Denver. The Pediatric Brain Tumor foundation benefits from this ride. We will send information via email regarding plans for getting to the staging site.

Ron and Marsha will be participating in the International Couple of the Year selection at Wing Ding in Grapevine this year. We are leaving on Friday and doing a forced march to get as far as possible so we can be at the competition on Saturday afternoon. We will be returning on Monday after some quality time shopping for safety chrome at the vendors. If you are going, or want to ride at least one way with us, please call me at 591-2739. Also we will be staying at the Dallas-Ft. Worth Airport North Holiday Inn so give us a call and we can all get together for dinner or something.

We are also in the early stages of planning another camping trip. Keep your eyes open for information if you like to camp by a stream in the mountains. We were just there, and it is a very pretty loca-

tion. Hiking, fishing or just kicking tires.

Remember to register for the District Rally. Montrose in September will be great. Log on to the District website for a form.

[www.coloradogwrra.com](http://www.coloradogwrra.com) will get you there.

Hope to see you at our next meeting. Since most of the chapter officers will be out of town for one reason or the other on the 3<sup>rd</sup> of July, and many folks have things planned, we are rescheduling the chapter meeting to the 10<sup>th</sup>. This may cause a conflict with the our meeting place at the church, so we will get our the information if we have to have a rolling meeting, or change it to a breakfast meeting somewhere.

Until the next time, put lots of safe miles on those two wheelers.



## Memorial Day Weekend Ride



Pictures from the Memorial Day weekend run to Laughlin NV. Dave and Kathy, Darrel and Laurie, Bob and Darlene met Pat and Pearl Riggins there for a great weekend.



## Chapter I Staff

### *Chapter Director*

Dave & Kathy Wren - 719-591-2739  
**dewglwren@worldnet.att.net**



### *Asst. Director*

### *Asst. Director*

### *Historian*

### *Membership Coordinator*

### *Newsletter Editor*

### *Phone Tree Coordinator*

### *Ride Coordinator*

### *Rider Education*

### *Store and 50/50*

### *Sunshine Committee*

### *Treasurer*

### *Webmaster*

### *Couple of the Year (COY)*

### *Individual of the Year (IOY)*

Mark & Sue Damschen - 719-481-9263 **mdamschen@msn.com**

Ron & Marsha Curry - 719-488-9865 **rmgcurry@aol.com**

Jane Doan - 719-392-0025

Ron & Marsha Curry - 719-488-9865 **rmgcurry@aol.com**

Linda Shelley - 719-748-8573 **lshelley@animail.net**

Laurie Scholsser - 719-227-9560 **darcruzan@aol.com**

Mark & Cindy Atwell - 719-535-8938 **markatwell@yahoo.com**

Mark Damschen - 719-481-9263 **mdamschen@msn.com**

Jeannie Bondurant - 719-599-8495 & Carol Farmer - 719-481-4235  
**carolcfarmer@yahoo.com**

Bob & Jan Strath - 719-594-9685 **bobstrath30@msn.com**

Paul & Jeannie Bondurant - 719-599-8495 **wings83@worldnet.att.net**

Lewis & Carol Farmer - 719-481-4235 **springwingsweb@yahoo.com**

Mark & Cindy Atwell - 719-535-8938 **markatwell@yahoo.com**

Mark Damschen - 719-481-9263 **mdamschen@msn.com**

## Region and District Staff

### Region Staff

#### Director

Rick & Sandy Dyer - (714) 970-6801 - [gwcadd@aol.com](mailto:gwcadd@aol.com)

#### Educator

Jerry and Patricia Borge - (209) 694-8656 - [mtnbikers@goldrush.com](mailto:mtnbikers@goldrush.com)

#### Leadership Trainer

Carl & Becky Manning - (303) 932-9517 - [cmann87917@aol.com](mailto:cmann87917@aol.com)

#### Member Enhancement Director

Richard Shields - (480) 391-7018 - [cd\\_azs@earthlink.net](mailto:cd_azs@earthlink.net)

#### COY/IOY Coordinators

Rich and Linda Fuller (970) 874-8830 - [rlwing@juno.com](mailto:rlwing@juno.com)

#### Newsletter Editor

Ron & Marsha Curry - (719) 488-0965 - [colowinged@aol.com](mailto:colowinged@aol.com)

#### Webmaster

Paul & Linda Fenton (949) 597-0232 - [pfenton@plgassociates.com](mailto:pfenton@plgassociates.com)

#### Trike Sig Representative

Vacant

#### Lady Rider Representative

Lorrie Gary (949) 824-6751 - [lgary@uci.edu](mailto:lgary@uci.edu)

#### Stores

JoAnn & Bill Hitt - (480) 897-0493 - [jobill1968@msn.com](mailto:jobill1968@msn.com)

#### Treasurer

Gary & Gayla Gresham - (909) 681-3253 - [1ggresham@earthlink.net](mailto:1ggresham@earthlink.net)

#### COY

David & Robin Bray

### Colorado District Staff

#### District Director

Terry & Shirley Hawkins - 970-249-1803 - [sthawk@montrose.net](mailto:sthawk@montrose.net)

#### Assistant Director

Mike Walker & Kristy Moore - 303-431-7582 - [ewingwalker@attbi.com](mailto:ewingwalker@attbi.com)

#### Assistant Directors

Chris & Casey Ward - 719-495-4707 - [chrisward@hp.com](mailto:chrisward@hp.com)

#### Rider Educators

Phil & Barb Talbott - 720-685-8299 - [ptblkwn1@juno.com](mailto:ptblkwn1@juno.com)

#### Asst Rider Educator

Jim Waddell - 303-674-4958 - [candjwaddell@hotmail.com](mailto:candjwaddell@hotmail.com)

#### Web Master

James & Janet Wohlford - 303-979-0196 - [mrdocfox@aol.com](mailto:mrdocfox@aol.com)

#### Treasurer

Irene Means - 970-240-1633 - [trikerchick@msn.com](mailto:trikerchick@msn.com)

#### Trainers

Mike & Becky Ackerman - 303-988-0413 - [bikermha@aol.com](mailto:bikermha@aol.com)

#### Membership Coordinators

Virgil Kipers - 303-948-9504 - [vkipersjr@juno.com](mailto:vkipersjr@juno.com)

& Nancy Hanson-Kipers - [nh-kwhtwing@juno.com](mailto:nh-kwhtwing@juno.com)

#### Newsletter Editors

Ron & Marsha Curry - 719-488-9865 - [colowinged@aol.com](mailto:colowinged@aol.com)

#### Public Relations

Wayne & Myrna Brautigam - 970-223-0098 - [bigwayneb@yahoo.com](mailto:bigwayneb@yahoo.com)

#### Ambassador

Steve Randolph - 303-987-9099 - [wingncolo@attglobal.net](mailto:wingncolo@attglobal.net)

#### COY & IOY Coordinators

Rich & Linda Fuller - 970-874-8830 - [rlwing@juno.com](mailto:rlwing@juno.com)

#### COY

Monty & Cindy Loftus - 970-686-9731 - [rcar427@aol.com](mailto:rcar427@aol.com)

#### IOY

Wayne Champlin - 303-679-8052 - [champlin2649@msn.com](mailto:champlin2649@msn.com)

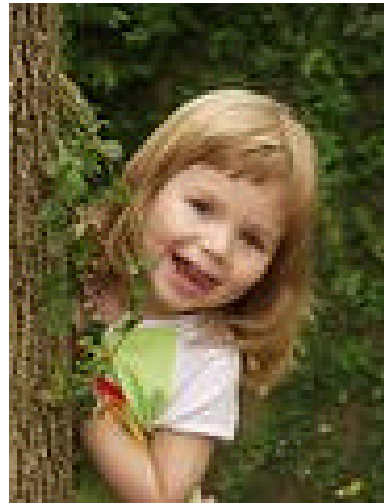
If some of this information is incorrect, I apologize. I try to keep this list current. Please let me know if I have a mistake. *Linda*

## Other Chapters and Meeting Info

<i>Chapter</i>	<i>Director</i>	<i>Phone</i>	<i>When &amp; Where</i>
A	Bill & Katie Wieder	303-798-3522	1 <sup>st</sup> Thu 7pm Littleton
B	Mike & Robin Bradbury	970-241-3933	1 <sup>st</sup> Sat 8am Grand Junction
C	Curtis & Janet Lennox	719-372-3086	3 <sup>rd</sup> Sat 9am Canyon City
D	April & Ed Lugo	970-389-1352	1 <sup>st</sup> Sun 12pm Holiday Inn, Frisco
E	Vince & Janet Hauk	303-430-8929	2 <sup>nd</sup> Fri 7pm Arvada
G	Monty & Cindy Loftus	970-686-9731	3 <sup>rd</sup> Sun 8am Ft. Collins
I	Dave & Kathy Wren	719-591-2739	1 <sup>st</sup> Sat 9am Colorado Springs
J	Bob Anderson	303-750-7928	2 <sup>nd</sup> Wed 7pm Aurora
K	Robert Van Winkle	970-330-1301	1 <sup>st</sup> Sat 9am Greeley
L	Al & Jeannie Plumhoff	303-670-0318	1 <sup>st</sup> Mon 7pm Lakewood
N	Mike & Debbie Rose	719-485-3535	1 <sup>st</sup> Sat 5:30pm Pueblo
O	Ron & Rita Sweetin	303-776-0081	3 <sup>rd</sup> Sat 8am Berthoud
Q	Derek & Laurie Fuller	970-874-0961	3 <sup>rd</sup> Sat 8:30am Delta
T	Gary & Jan Gardner	970-882-7998	4 <sup>th</sup> Sat 8am Christina's

## Special Events

The Ride for Kids is finally coming to Colorado. It's only 20 years old. June 27th is the date. Heritage Square in Denver is the staging area. The route will probably be to Evergreen, Morrison and end at Bear Lake Park. We will send more info, but put it on your calendar. It is for a good cause and should be fun. We did the toy run here this year and it is really an awesome sight to be in a parade of bikes that stretches as far as you can see in front and back of you.



## Target Fixation By James R. Davis

Sometimes we riders tend to minimize the risks we hear about. Take, for example, what every student of the Motorcycle Safety Foundation has heard about - 'target fixation'. 'Fixating' on something means not being able to take your attention (your eyes, for example) away from it. In the case of riding motorcycles, for example, this leads to the phenomena wherein our motorcycles tend to go in the direction we are looking and is usually described with an example familiar to all -- that if you see a pothole in the street ahead of you and don't take your eyes off it you are likely to hit it.

While that is true, it is too trivial an example to get our attention appropriately. We are left with the opinion that 'target fixation' is of trivial concern because we all know that we can, if we try, avoid that pothole.

In the case study we talk at great length about the tragic consequences possible from thinking that target fixation is a trivial problem. You are strongly encouraged to read that case study. While it is more graphic than most will be comfortable with, I can think of nothing that will better make the case for respecting the danger of target fixation.

It is insufficient to simply post the advise that you should avoid target fixation. Saying "don't fixate" is all very well, but once it starts, you need a positive technique to get yourself out in one piece. So once you are in trouble, use target fixation to save your skin.

Don't look at the oncoming truck/tree/pothole; figure out where you would rather be and fixate on that instead. In fact, those of you that have taken the MSF classes know that "target fixation" is an excellent way to control skids - fixate on a point dead ahead on the horizon, and you'll be well on the way towards automatically correcting most skids.

Article provided by Mark Damschen



## *Ride to the BuckSnort*



Butch and I joined the Saturday ride as the group rode through Florissant. Traffic was heavy, but we caught up with them just after they turned off Hwy 24 and headed toward Tarryall. The Question of the morning was, "Tom, who's that couple following you?" "I don't know. Looks like an old Yamaha." "It's that unfriendly couple we passed at the gas station!" But alas, the guys were caught talking about someone who was on the SAME CB channel and KNEW who they were.

Mark sounded embarrassed when I came back with "It's the Shelley's and I DID wave as you went by." That's ok. We all had a good laugh!

The picture to the left is Anna, a friend of Cindy Atwell's. We enjoyed having her along.

Linda Shelley

## *Region F Newsflash*

Boy! Think about this? "Half of the year in almost gone." There is only 215 days left till Christmas and WOW only 45 days left until the deadline to the first ever Region F Newspaper. What is that you say?? **REGION NEWSPAPER?** Well, let me tell you. This is your newspaper. If you have good things to show and tell us about your chapter then do so. Send it to Ron and Marsha Curry the Region F Couple of the Year. You will see the Utah Care Bear Story in this issue. You will see the AZ Masters Program also. The California Top Gun safety story, and more. If you send in photos you will see your favorite people, which is you! This is not a rehash of what Wing World puts out. It is what you tell us. The only "BUT" is that you or someone must send in all the stories and pictures. So copy them from your web pages and newsletters and let's see those happy smiling Valkerie and Wing swept faces. In the last article we said, "You only get out of something what you put into it." So in this case it is literal. We are giving you bragging rights for your chapter's favorite activities and charities. Write about your chapter and e-mail pictures in the jpeg format. We want your chapter in the Newspaper. This paper will be going out to every GWRRA household. Young ones, old ones.... if your house is a GWRRA house then you're going to receive the issues. **You can advertise your Fundraiser, Poker Ride, Rally, or other chapter functions for FREE!**

Send all information to the e-mail address of [COLOWINGED@aol.com](mailto:COLOWINGED@aol.com).

We are soliciting advertisers with request forms for their support in our Region F Newspaper. If you know of an advertiser then call or e-mail me and I will send you the sales contract for the newspaper. This is a great project, which benefits everybody in GWRRA and Region F.

Sincerely,  
Rick and Sandy Dyer  
Region F Directors

## *Saturday Ride to the BuckSnort*



This was a really BIG burger. Even Tom was wondering if he could smooch it enough to get in in his mouth.



After we ate, we were planning on stopping at the Rhubarb Festival. But alas, it ended at 2:00 pm and we missed the parade.



# June / July 2004

Sun	Mon	Tue	Wed	Thu	Fri	Sat
13	14	15	16	17 Dinner Ride meet at Apex 6:00	18	19
20	21	22	23	24	25	26
27 Ride for Kids, Heritage SQ-, US 40 * I70, Golden	28	29	30	1	2	3 Wind Ding in Grapevine, Tx
4 Wing Ding until Thursday	5	6	7	8	9	10 Chapter I meeting re-scheduled

## Upcoming Rally Guide

### 2004 Region F/CA District Rally

#### TOTALLY TAHOE

Sept. 2-5 ... Lake Tahoe, California

<http://gwrra-regionf.org/RallyInformation.htm>

Colorado Rally ... Sept. 9-11, Montrose, Colorado

<http://coloradogwrra.com>

New Mexico Rally ... Oct. 8-10, Roswell, New Mexico

<http://gwrra0nm.org>

Arizona Rally ... Oct. 22-24, Location to be announced

<http://gwrraaz.com>

### MOTORCYCLE VIDEOS



Steve Munter has three Gold Wing related training videos that he would be happy to loan out. 719-536-0315

- Gary Sanford's Slow Speed Cycling Seminar
- Touring and Braking
- Co-Rider

Steve has also ordered a copy of the History Channel documentary broadcast a few months ago regarding how Gold Wings are built at the factory in Ohio.

Butch Shelley has

- Colorado on 2 Wheels — VHS
- The Unofficial History of Harley-Davidson Motorcycles — DVD

Please contact Steve Munter with your list of motorcycle videos to loan and share.



Apex Sports is one of Colorado's leading motorcycle dealerships, offering a premium selection of new and used motorcycles, ATV's, custom trikes, and trailers. We provide a wide variety of high quality parts and accessories. Additionally, we have a fully certified service department to meet all your needs.

Our staff is dedicated to ensuring that you are completely satisfied in the purchase and ownership of your Apex Sports motorcycle, ATV, or trike. Apex Sports is family owned and operated since 1960.

327 S. Weber  
Colorado Springs, CO 80903

Phone (719)475-2437  
Toll Free (800)748-1799  
Fax (719)475-0543

Email: comments@apexsportsinc.com



Linda & Butch Shelley  
917 Crestridge Dr.  
Florissant, CO 80816

Mailing Label Goes Here