



December 2009

Springs Wings

Colorado Springs

Chapter I



Merry Christmas



Harder's Happenings to Shelley Shenanigans

As Tom and Monica retire as Chapter Directors, Butch and Linda would like to thank them for all the hard work they have put forth over the last three years. Now they can sit back on their bikes and enjoy the ride.

Couple and Individual of the Year will be announced at the January meeting.

We wish everyone a happy and safe holiday season.



Merry Christmas to all -

from the Harders and Shelleys

2009 Chapter I Staff

Chapter Director—Tom & Monica Harder

719-481-9044, tmharder@comcast.net

Asst. Director—Butch & Linda Shelley

719-495-5741, butchshelley157@msn.com

Historian—Vacant

Newsletter Editor—Linda Shelley

719-495-5741, lshelley@animail.net

Phone Tree Coordinator—Nancy Lockhart

719-550-9267, clock0430@comcast.net

Rider Education—Earl Edwards

719-637-0908, Edwards_1500@hotmail.com

Store—Jeannie Bondurant, 719-599-8495

Sunshine Committee—Nancy Powell

719-471-8570, n.l.powell@att.net

50/50—Kim Athman

Treasurer—Paul & Jeannie Bondurant

719-599-8495, wings83@worldnet.att.net

Webmaster—Lewis & Carol Farmer

719-481-4235, springwingsweb@yahoo.com

Couple of the Year (COY) - Chris & Sandie Erskine,

Individual of the Year (IOY) - Linda Shelley

RIDE PLANNING

Please check your information in the 2009 calendar. Let me know of any changes I need to make for birthdays and anniversaries.

Chapter I's Ride Planning (and pot luck) meeting will be on Jan. 16, our house, at 4:00. Directions will be provided at the Jan. 2 meeting.

Come with ideas for rides (including day rides, overnight, camping, etc.) and other activities.

Linda



Visit Chapter I at
www.springswings.org

Chapter I meeting
information:

WHEN

First Saturday of the month, 8:30
coffee, 9:00 meeting

WHERE

Holy Cross-Lutheran Church
4125 Constitution Ave.



CHRISTMAS PARTY 2009



CHRISTMAS PARTY 2009



CHRISTMAS PARTY 2009



MOTORCYCLES AT INTERSECTIONS

During this summer, the city has had a couple of motorcycle accidents (that made the local news) at intersections. A majority of accidents occur when vehicles turn left in front of motorcycles. This occurs because vehicle drivers are not looking for motorcycles, but for other vehicles. Whether it is a stop sign, traffic light or any other intersection already be ready for that vehicle to pull out in front of you. The majority of the time motorcycles are hard to see from a distance even with a headlight on. We are a smaller object to be seen at a distance. One of the safety features that I put on my motorcycle is the Kisan headlight modulator. It does help me get noticed, but it is not a guarantee that the other drivers will see but it does help.

Here are some safety tips from **Minnesota Motorcycle Safety Center** on going through an intersection:

Intersection Safety Tips

- Assume you are invisible to other drivers
- When approaching intersections, assume cars traveling in the opposite direction are going to turn left in front of you
- Anticipate the moves of other drivers. Watch their head movement. It often indicates where they will be going.
- Watch for steering wheel movement and the turning of the front wheels. These are usually the last warnings before the vehicle turns.
- Reduce your speed. This will decrease your stopping distance and increase the amount of time the other driver will have to see you. However, if you reduce your speed too much you may be inviting the other vehicle to turn in front of you.

Advanced Riding

- Cover your brakes and clutch to reduce your reaction time. Some riders will drag the rear or front brake as they near the intersection to further reduce reaction and braking time.
- Ride in a gear that will provide rapid acceleration
- If another vehicle is passing through the intersection at the same time, try to ride alongside it and use it as a shield. Beware of riding in another driver's blind spot. If you cannot ride beside it, drop back to create a gap. This will make it easier for the other drivers to see you.
- Take note of vehicles parked on the side of the road or objects beside the road that will obstruct the view of cross traffic
- Choose a lane position that will increase your visibility to other drivers. Slight movement within your lane may help attract attention while movement from one side of the lane to another may indicate you are preparing to turn.
- If other vehicles are near you, the other driver's attention will most likely be focused on them. Bigger objects get more **attention!**
- If the light has just turned green for traffic going in your direction, check the cross traffic for color blind, late-for-a-meeting drivers. Make sure the intersection is clear before you proceed.
- If the light has just turned yellow for traffic going in your direction, check your mirrors for motorists behind you who may think you will pass through the intersection.
- If the intersection is extremely busy or hazardous, choose another intersection to conduct your turn, or choose another route entirely

Since a few of us are still riding, we still need to be more careful of intersection. Reduced amounts of motorcycle are on the road since the weather has turned unfavorable cold every other week. Remember, ride your ride and use your best judgment when crossing through an intersection.

Earl Edwards
Chapter I Rider Educator





Santa's Helpers

Here it is almost Christmas...everyone is busy with their family events, wrapping gifts, and baking up a storm.

In the mist of all of this our Chapter managed to find time to gather up all the toiletries from the summer trips and donate them to help others feel loved and blessed to have GWRRA Chapter I care enough to help them through the winter season.

Saturday, December 12, a group of Chapter I ladies got together for three hours to sort, bag, and tag the donated toiletries with a little holiday touch. Besides toiletries there were a few toys, cookies, and candy to bag as well.

A total of 23 Quantas bags (compliments of our Quantas travelers the Hausers and Kennedys) of toiletries, 40 individual Christmas bags of toiletries, 27 individual Christmas bags of cookies and candy, and a variety of \$ store toys. All were divided up and delivered to Ronald McDonald house and to the Marion House to distribute on Christmas.



Thanks to all of you who donated the toiletries, ribbons, bags, cookies, candy, toys, and special made tags to let them know that Chapter I is wishing them a more joyous season. Thanks to our little elves: Jo Ann, Jeannie, and Nancy for the packaging and Santa Claude for loading

them in the "sleigh" for delivery.

We hope to do this again in the summer so please keep saving those unwanted hotel samples and give them to Nancy Lockhart or Didi Reisler in June 2010. What better way to "Pay It Forward"!

ps. anyone wanting to help package them next summer please contact Nancy Lockhart or Didi Reisler.



For Sale

I just listed my Wing with GWRRA and thought I'd forward pics to you locally in case you know someone who might be interested. I am currently living in C. Sprgs. but will be moving to the mountains in SW CO in the spring. Unfortunately we can make more use with a Jeep than a Wing so reluctantly we are offering it for sale at \$3,000. 1988, 1500 always garaged and serviced with 130K good highway miles. Anyone can reach me at 710-459-0514 or jmd519@msn.com



Thanks,

Jerry
Dierks



I would like to introduce you a very good company. It can offer you all kinds of electronic products that you may be in need, such as lap-tops ,gps ,TV LCD, cell phones, ps3, MP3/4, motorcycles and etc.....

You can take some time to have a check ,there must be something interesting you 'd like to purchase .

Web: www.enjoyshopcn.com

Email: enjoyshop@188.com

MSN: enjoyshop888@hotmail.com

Earl



WARNING
Don't catch
snowflakes on your
tongues until all the
birds have flown
South.



As the new year begins and we step up to our new positions as Chapter Directors, we still need help filling vacancies on our staff.

- Scrapbook/Historian
- 50/50
- Ride Coordinator
- Membership Enhancement Coordinator
- Camping SIG (Special Interest Group)
- Community Service Coordinator
- Chapter Photographer

Sunday Brunch at The Broadmore



Zoom in to see the details of the gingerbread village. This was my first time to see real gingerbread houses and all the intricate details people include. It's worth the visit just to see this display.

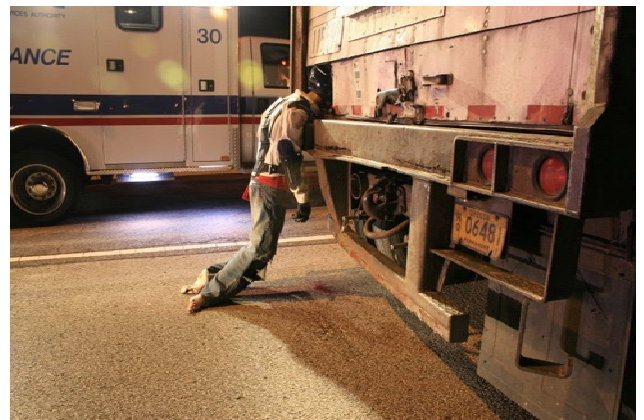
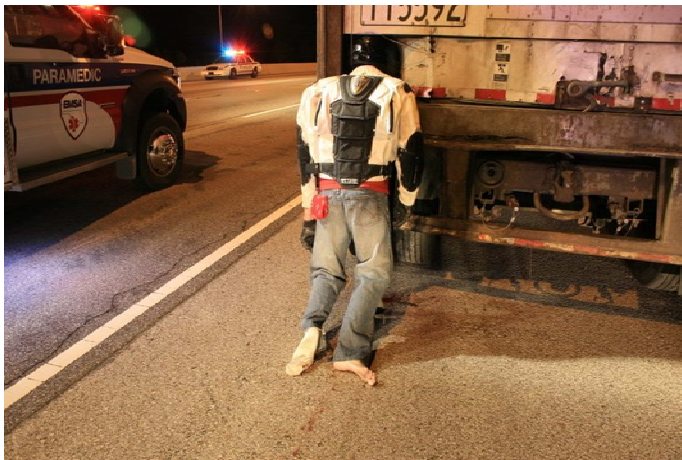
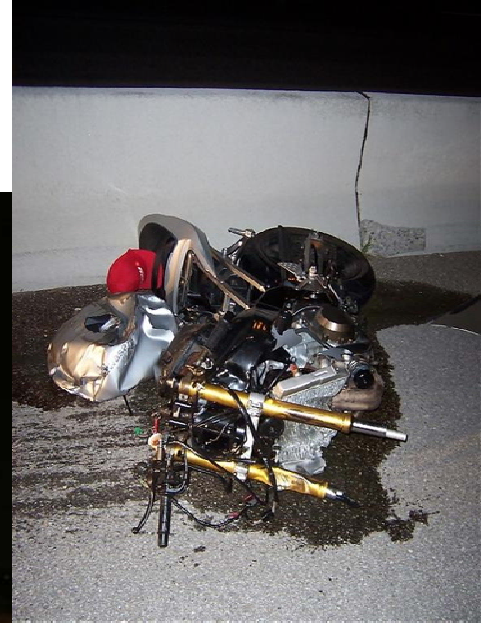


Words of Wisdom

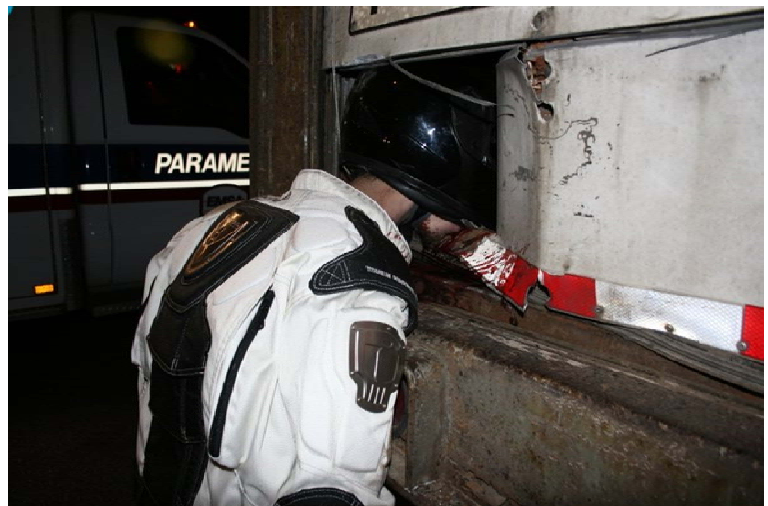
A truck was traveling down the highway at around 1 o'clock in the morning near Tulsa, Oklahoma. Motorcyclist was traveling at ~120 mph and ran into the back of the moving semi-truck.

Truck driver said he felt the impact, and it took almost a 1/4 mile for him to pull over.

This is what he found...



He lived.
Wear your
helmet!



New Year's Day Rose Parade

The Tournament of Roses Parade theme this year is
"A Cut Above the Rest"



Ride for Kids featured on Honda's Rose Parade float January 1, 2010 watch it.

From <http://corporate.honda.com/ShipofDreams>

American Honda's 2010 Rose Parade float entry, "Ship of Dreams," is a 45-foot tall, 75-foot long, three-masted sailing ship with its sights set on helping children. Honda chose to celebrate the seven organizations featured on the ship because each has a long history of helping children in need. Together, they represent more than 120 years of partnership with American Honda. It's a true ship of dreams, with ASIMO at the helm, and some of the children whose lives have been made better by Honda's philanthropy partners on board. Look for a special surprise when the "Ship of Dreams" rounds the corner in front of the cameras at the 121st Rose Parade on Friday, January 1, 2010, at 8 a.m. (PST).



Asheville, N.C. – The Pediatric Brain Tumor Foundation (PBTf) and its Ride for Kids® program will be featured on Honda's Rose Parade float, "Ship of Dreams," during the 121st Rose Parade on Friday, Jan. 1, 2010, at 8 a.m. PST. The Honda float is a three-masted sailing ship captained by a model of the company's ASIMO humanoid robot and featuring seven of Honda's philanthropic partners that help improve the lives of children. Representatives from each of the organizations will be riding on the float when it sets sail in front of millions of viewers watching from around the world. The PBTf's float rider is Trent, a 16-year-old brain tumor survivor from Simi Valley, Calif.

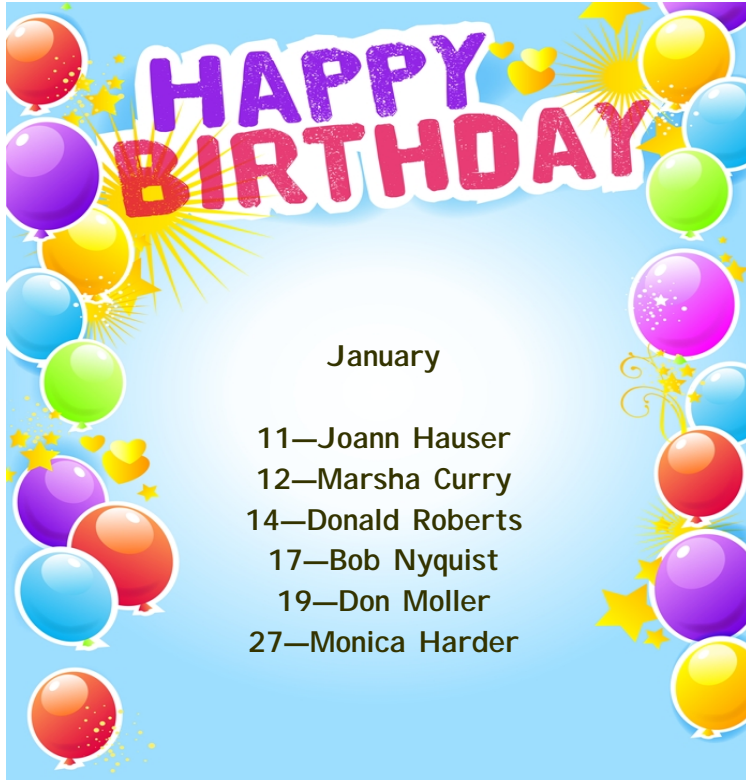
"It is an honor to be associated with Honda, which has been the presenting sponsor of Ride for Kids since 1991," said PBTf President Dianne Traynor. "We are very grateful to be featured on their Rose Parade float. It gives us a wonderful opportunity to educate the public about childhood brain tumors and to advocate for the lives of these kids. Having a pediatric brain tumor survivor ride on the float also delivers a very positive message of hope for the families that are dealing with this disease."

The sails on the 45-foot-tall, 75-foot-long Ship of Dreams feature the names and logos of the seven Honda partners, also including Big Brothers Big Sisters of Orange County, College Bound, National Youth Project Using Minibikes (NYPUM), Pediatric Therapy Network, Special Olympics Southern California, and Students Run L.A.

"As one of the longest-running sponsors of the Tournament of Roses, every year we try to do something extra special with our float entry and this year is no exception. We're thrilled this year to shine a light on some of our long-time community partners that help fulfill the dreams and needs of children," said Stephan Morikawa of American Honda Corporate Community Relations.

As part of Honda's sponsorship of the Tournament of Roses, the 2010 Acura ZDX will lead the parade as the pace car. And, annually Honda provides vehicles, Metropolitan scooters and generators for use by Tournament personnel. Honda's multipurpose utility vehicle, Big Red, will also make its Rose Parade debut this year. Honda's Rose Parade float entries have captured major awards in 14 out of the last 15 years.

Upcoming Events & Celebrations



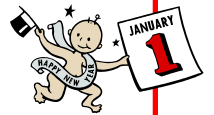
ANNIVERSARIES

Jan 13
Eric & Debbie Hutchins

Jan 22
Ron & Marsha Curry

Dates to Remember

Dec 25—Christmas
Jan 1—Annual New Year's Day ride
Jan 2—First meeting of 2010
Jan 9—District Officer's Meeting
Jan 16—Ride Planning
TBD—Dinner Ride, hosted by the Erskines



Marsha & Ron Curry
Rusinak Real Estate ... Direct 719-590-6113
Marsha@2currys.com or Ron@2currys.com
*Specializing in residential real estate transactions
in the Pikes Peak Region*

2currys.com We unlock the doors...



Experience AUSTRALIA on a GOLDWING!
Choreographed Adventure Tours ~ Half-Day to 30 Days

For more information contact:

Phil Kennedy - Premier Aussie Specialist
N American Agent for Chapel Australian Bike Tours
719-310-4333 or 888-899-GDAY

WWW.GOLDPHIL.COM

For all domestic travel & entertainment go to...
www.AussieWorldTravel.com

Phil & Golden Kennedy
719-226-7939
goldphil@comcast.net



Message from your New Chapter Directors & Newsletter Editor

There were probably many, many times this year when I may have disturbed you, troubled you, pestered you, irritated you, bugged you, or got on your nerves with all the e-mails I send.

So today I just wanted to tell you.....



Suck it up, "Cupcake"!!!

'Cause there are NO CHANGES planned for 2010 !!!

